

CheckMyCCTV™ Connector Installation Guide

Issue 1.1

CONTENTS

Introduction.....	2
System Requirements.....	3
PC System requirements for CheckMyCCTV™ Connector:	3
Installing CheckMyCCTV™ Connector.....	3
To install the CheckMyCCTV™ Connector:	3
Running CheckMyCCTV™ Connector	4
Locating the Connector Key.....	4
Adding Connector Sites to The CheckMyCCTV™ Software	5
Configuring CheckMyCCTV™ for use with Connector Keys	5
Adding a Connector Site into CheckMyCCTV™	5
Adding a Unit to the Connector site	6
Legal Information	6
Copyright	6
Disclaimer	6
Trademarks	6

INTRODUCTION

CheckMyCCTV™ allows you to monitor the status of your clients' CCTV systems as part of a proactive maintenance solution.

CheckMyCCTV™ works by connecting to remote systems and performing a range of diagnostic and operational checks. However, if there is no direct remote connection to the CCTV systems, then this is not possible, which is where CheckMyCCTV™ Connector comes in...

CheckMyCCTV™ Connector is a software application that performs the checks within the clients' network and reporting the results back to your CheckMyCCTV™ Service Software via an outgoing internet connection.

Typical applications where a direct external connection to a CCTV system is not possible include, Education, Retail, Critical Infrastructure, Banks, Logistics, Transport, Corporate, Utilities and more.

SYSTEM REQUIREMENTS

CheckMyCCTV™ Connector operates as a Windows Service on a Microsoft Windows® based PC. To operate correctly, CheckMyCCTV™ Connector needs:

24/7 operation.

Connection to the CheckMyCCTV™ portal (checkmycctv.

Network connection to each DVR/NVR.

Relevant Port numbers and Username/Password for each DVR/NVR.

PC System requirements for CheckMyCCTV™ Connector:

Dual Core processor

Microsoft Windows 10 or (Virtual) Server 2012 and above.

4GB of RAM (8GB Recommended).

32GB of hard disk storage.

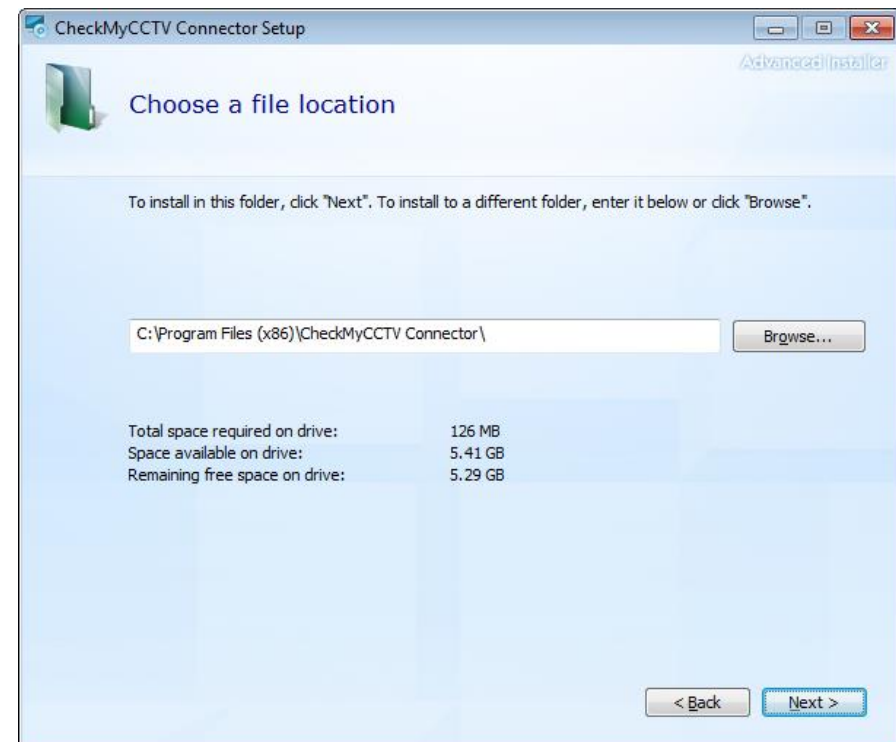
IMPORTANT: The installation program will check to see whether the pre-requisites have been installed on the computer. This may download and install several programs from the Internet which may take some time depending on internet connection speed.

INSTALLING CHECKMYCCTV™ CONNECTOR

To install the CheckMyCCTV™ Connector:

Double click on the **CheckMyCCTV™[VERSION]-Connector.exe** file to start the installation and follow the on-screen instructions.

Select a location where to install the software:

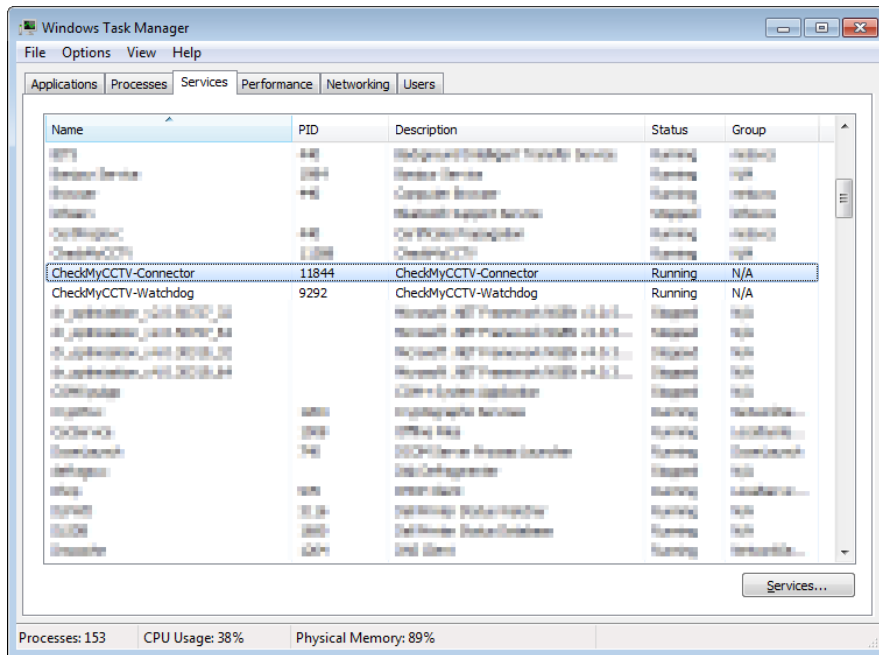


RUNNING CHECKMYCCTV™ CONNECTOR

CheckMyCCTV™ is a Windows Service, and will be run automatically once the software is installed and when the PC starts up.

To check the CheckMyCCTV™ Connector service is running:

1. Press CTRL – ALT – DEL and select **Start Task Manager**
2. Click the **Services** Tab...



3. Check that CheckMyCCTV™-Connector and CheckMyCCTV™-Watchdog Services are running.

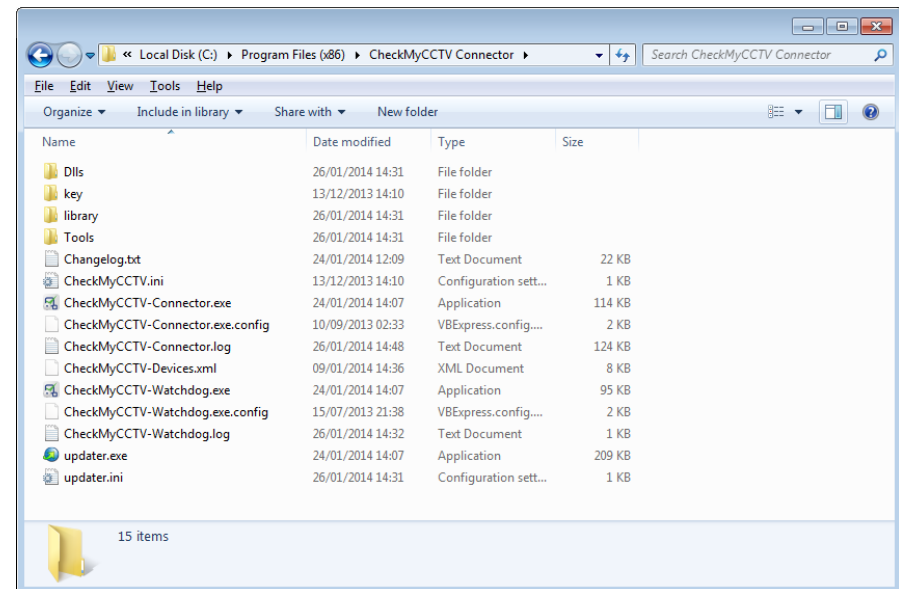
If either of these services are not running, right click and select **Start Service**.

NOTE: The CheckMyCCTV™-Watchdog service will monitor if the Connector service stops for any reason, and restart it.

LOCATING THE CONNECTOR KEY

A unique Connector Key is used to allow communication from the remote site to the CheckMyCCTV™ software.

The Connector Key is generated automatically when the software first runs. You can find this key in the 'Key' folder...



Open the **key.txt** file to display the 16 digit Connector key in this format:

XXXX-XXXX-XXXX-XXXX

IMPORTANT: The Connector key is required to add the site into the CheckMyCCTV™ Software. Make a note of the 16-digit code and keep it safe.

ADDING CONNECTOR SITES TO THE CHECKMYCCTV™ SOFTWARE

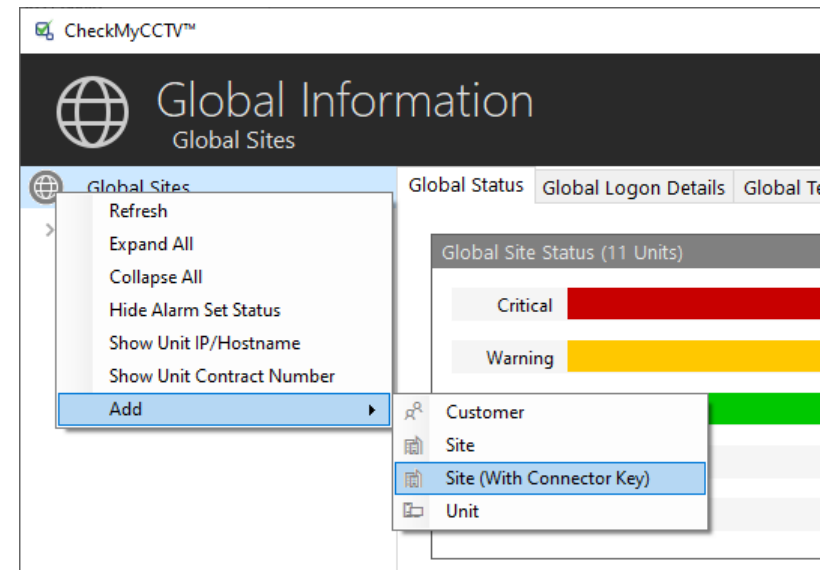
Configuring CheckMyCCTV™ for use with Connector Keys

CheckMyCCTV™ must first be configured to allow the use of Connector keys. To do this:

1. Open the **CheckMyCCTV™.ini** file which is in the directory CheckMyCCTV™ was installed into. i.e. **C:\Program Files (x86)\CheckMyCCTV™**
2. Under the [**CheckMyCCTV™**] heading, add the text **EnableConnector=1**
3. Save the file.
4. Close CheckMyCCTV™, ensure the **Shutdown CheckMyCCTV™ Service** checkbox is ticked.
5. Start CheckMyCCTV™.

Adding a Connector Site into CheckMyCCTV™

1. Open the CheckMyCCTV™ Software.
2. Right Click on the Site Tree where the Connector Site is to be placed.
3. Select **Add** and **Site (with Connector key)**



4. In the pop-up window enter the Site Name, and the Connector Key details:

Add Site (With Connector Key)

Site Details

Site Name
Example Connector Site

Connector Key
a12b-c3d4-e5f6-g7h8

Cancel Ok

Once the Connector Site has been created, any Units added within the Connector Site will be using the network details where the Connector software is installed.

Adding a Unit to the Connector site

Once the Connector Site has been created using the Connector Key, Units can be added to the Site in the normal way.

1. Right Click on the Connector Site.
2. Select **Add** and **Unit** and enter the device details.
3. License the Unit as normal.

IMPORTANT: The information to and from the CheckMyCCTV™ Connector is polled every 10 minutes, so it may take some time to initially add systems.

LEGAL INFORMATION

COPYRIGHT

Copyright © 2021 CheckMySystems Ltd.

The contents of this publication may not be reproduced in any part or as a whole, transcribed, stored in a retrieval system, translated into any language, or transmitted in any form or by any means, electronic, mechanical, magnetic, optical, chemical, photocopying, manual, or otherwise, without the prior written permission of CheckMySystems Ltd.

Published by CheckMySystems Ltd. All rights reserved.

DISCLAIMER

CheckMySystems does not assume any liability arising out of the application or use of any products, or software described herein. Neither does it convey any license under its patent rights nor the patent rights of others. CheckMySystems further reserves the right to make changes in any products described herein without notice. This publication is subject to change without notice.

TRADEMARKS

CheckMySystems and CheckMyCCTV™ are registered trademarks of CheckMySystems Ltd. Other trademarks mentioned in this publication are used for identification purposes only and may be properties of their respective owners.

Tel: +44 (161) 8706137

info@checkmysystems.com

www.checkmysystems.com

©2021 CheckMySystems Ltd., Bank House, Market Square, Congleton, Cheshire, CW12 1ET

